

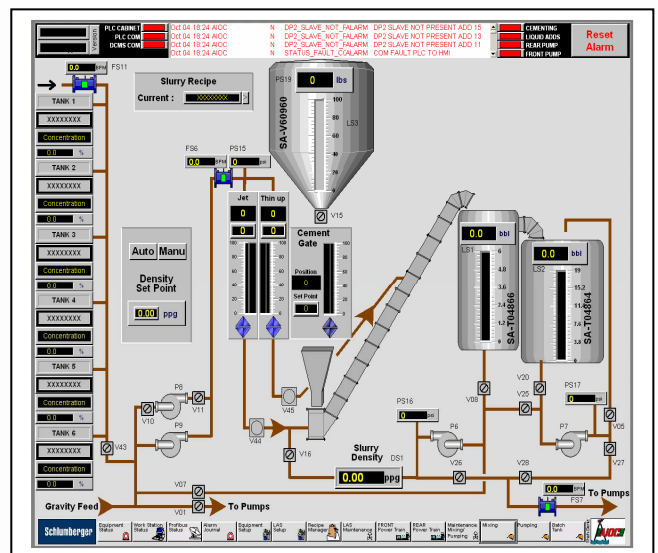
# PROCESS CONTROL OFFSHORE

## Drilling shaft case hardening process

- Supervision and control of processes implemented
- Electrical equipment namely laid out in risk-prone areas

## Implementation

- On-site programming, pilot control of well-known software packages, proven in the field.
- Wiring of cabinets and electrical installations



**Many interventions and installations performed on platforms, boats, trucks over different continents.**

Complete service : from the design as per specifications, installation and guidance to the production launch of the site.

« offshore » qualified personnel

Qualified to work in risk-prone areas.